

Tantanoola Pulp Mill

COVEY CASE STUDY

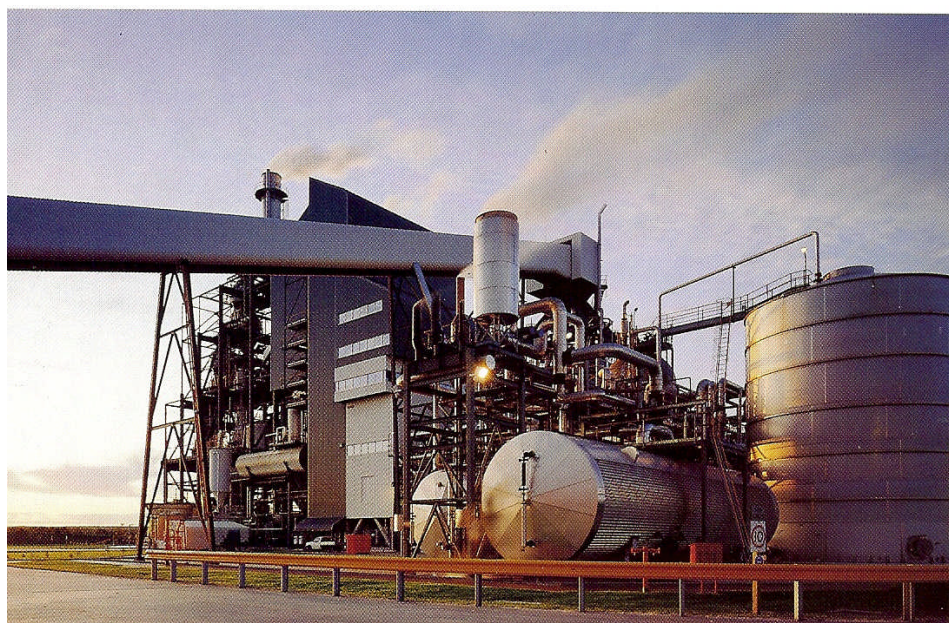
When Kimberly Clark Australia built the Tantanoola Pulp Mill, it was the first greenfield pulp mill built in Australia for some decades.

Early in the design stage KCA engaged Covey Consulting to provide process design input and progressively increased the services provided by Covey Consulting.

Covey Consulting undertook a wide range of services on the project including:

- The process design of the fibre line, process design for pipe-work throughout the project, process specifications for most of the instrumentation, most of the commissioning of the fibre line, and various tasks relating to mechanical design, mill systems and equipment procurement.
- Calling for tender and tender evaluation for all major process equipment.
- Commissioning and plant optimisation and establishment of various mill systems.
- Development of computer models for steam distribution system dynamics production planning, process inventory management.
- Design of all hazardous chemical storage areas.

Refinements made by Covey Consulting resulted in substantial capital savings



PO Box 99 Kew East VIC 3102

Tel: (03) 9859 4290 Fax: (03) 9859 4630

www.coveyconsulting.com.au

